



## The Stonington Harbor Yacht Club

### 2018 Friday Twilight PHRF Race Series

**A Great Family Sailing Event to Kick Off Your Weekend**

**June 29 – August 24**

### **NOTICE OF RACE**

#### **1 Organizing Authority**

1.1 These races are organized by the Stonington Harbor Yacht Club (SHYC).

#### **2 Schedule of Races**

2.1 Races will be held Fridays from June 29th to August 24<sup>th</sup>. **First warning will be at 1730**

2.2 The Race Committee will conduct one race lasting approximately 1 to 1-1/2 hours each race day.

2.3 A minimum of 3 boats need to be registered by 12 noon on Friday for Race Committee to facilitate the race.

Registration link: <https://shyc.us/submaster.cfm?aPage=calendardetails.cfm&CallID=7038>

2.3 Delays will be announced on VHF channel 79 and indicated by the display of pennant AP on the Committee Boat

2.4 Cancellation of the evening's race will be announced on VHF channel 79 every ten minutes between 1700 and 1800 hrs. on the race day. Cancellation notice may also be obtained by calling SHYC at 860-535-0112.

#### **3 Eligibility**

3.1 Races are open to all boats 22 ft. or more LOA with a valid PHRF-ECSA or NEMA rating. **All Sailors Welcome!**

#### **4 Classes**

4.1 Depending on the entries, the Race Committee may divide the fleet into two or more divisions. One-design boats 22 ft. LOA or longer will race and be handicapped as PHRF using established ECSA PHRF ratings for their Class; no rating certificate need be submitted but one-designs must meet Class Standards. A multi-hull class will be established for NEMA rated boats if three or more entries are received. Check scratch sheets for class/division assignments.

4.2 The scratch sheet will be available at the SHYC Clubhouse by 1200 on race days and from the Committee Boat (Galatea-II) or Mark Boat (Acis) up to 15 minutes before first warning each day.

#### **5 Entry**

5.1 Entry is by means of the standard SHYC Entry Form available in hard copy at the SHYC Clubhouse or on line at [www.shyc.us/racing](http://www.shyc.us/racing). The completed form accompanied by a check for the entry fee payable to SHYC and a valid PHRF-ECSA or NEMA rating certificate should be sent to SHYC, Attn. Race Committee, PO Box 87, Stonington, CT 06378, or delivered to the Clubhouse. Completed forms must be received by the entry deadline of noon on the Thursday before each race. Entry forms are valid for the 6-race series or for individual races but must specify which. Rating Certificates are valid for the season. Please note: This is an OPEN Race.

5.2 Entry Fee for members is \$150 for the race series or \$25 for a single race. Non-members \$165 for the series or \$35 for a single race.

#### **6 Rules**

6.1 Races will be governed by Racing Rules of Sailing, 2017-2020, as modified by this NOR and the SI's.

6.2 Cruising canvas only. No spinnakers of any type or headsails over 155 percent allowed.

#### **7 Course**

7.1 Races will be conducted in Fishers Island Sound, starting south of the Stonington breakwater and Wamphassuc Point. Courses will be described in the Sailing Instructions.

#### **8 Sailing Instructions**

8.1 Sailing instructions will be available in hard copy at the SHYC Clubhouse and on line at [www.shyc.us/racing](http://www.shyc.us/racing) by 0900 hrs. on the Thursday before each race.

#### **9 Awards**

9.1 After each race, small prizes for 1<sup>st</sup>, 2<sup>nd</sup> and 3<sup>rd</sup> places will be awarded at the shore party. Series awards will be presented at the SHYC awards night in October. A participant must compete in six of the nine races to be eligible for the series award. Low point scoring system (4 best results) will be used to determine series winner.

#### **10 Shore Party**

10.1 After each race, participants and their immediate families are invited to a reserved section of the Club patio for a fixed menu, self-serve buffet 'Racer's Dinner'. Approx. \$15 per person, reservations requested and can be made by committee boat.

#### **11 Additional Information**

11.1 See the SHYC Website at [www.shyc.us/racing](http://www.shyc.us/racing), or call the SHYC Clubhouse at (860) 535-0112.

11.2 All participants must sign a Liability Waiver form available at the Club or online. Waiver is good for the year.



## 2018 Friday Twilight PHRF Series June 29 through August 24th

# SAILING INSTRUCTIONS

### 1 Organizing Authority

1.1 These races are organized by the Stonington Harbor Yacht Club (SHYC).

### 2 Schedule of Races

2.1 Eligible boats will race each Friday from June 29<sup>th</sup> through August 24<sup>th</sup>.

2.2 First Warning will be at 1730 hrs.

2.3 The Race Committee intends to schedule races lasting 1 to 1-1/2 hours.

2.4 All boats intending to race must register through the online booking system by 12 noon on Friday.

2.5 A minimum of three boats need to be registered by 12 noon on Friday for Race Committee to facilitate the race. Registration link: <https://shyc.us/submaster.cfm?aPage=calendardetails.cfm&CallID=7038>

2.6 Delays will be announced on VHF channel 79 and indicated by the display of pennant AP on the Committee Boat.

2.7 Cancellation of the evening's race(s) will be announced on VHF channel 79 every ten minutes between 1630 and 1730 hours on the race day. Cancellation information may be obtained by calling the SHYC Clubhouse at (860) 535-0112.

### 3 Classes

3.1 PHRF rated boats other than one-designs will race as a class. If ten or more such boats enter, the Race Committee (RC) may divide the class into two or more divisions.

3.2 One-design boats will race in separate Classes. Any one-design class entering three or more boats will be assigned a Class on the Scratch Sheet and be given its own start. One-design boats must meet their class standards. One-designs must be 22 ft. loa or longer to participate.

3.3 If three or more multihull boats with NEMA Rating Certificates enter, they will race as a class. If fewer than three enter, they will be given a start approximately five minutes after the last Class but will not be scored.

3.4 Scratch Sheets with class/division assignments will be available at the SHYC Clubhouse prior to 1200 hours on race days and from the Committee Boat and Mark Boat up to 15 minutes before the First Warning signal.

### 4 Rules

4.1 Races will be governed by *Racing Rules of Sailing ,2017-2020* as modified by these *Sailing Instructions* (SI's) and the NOR.

4.2 Rules 44.1 and 44.2 will be changed to a penalty of one turn.

4.3 In the event of conflict between the NOR and these SI's, the SI's will govern. Changes to the SI's will be posted on the Club website [www.shyc.us/racing](http://www.shyc.us/racing) and Race News board in the Clubhouse by 1000 hours on race day. Hard copies will be available at the Clubhouse.

4.4 Cruising canvas only will be allowed; no spinnakers and only one headsail of 135% or less.

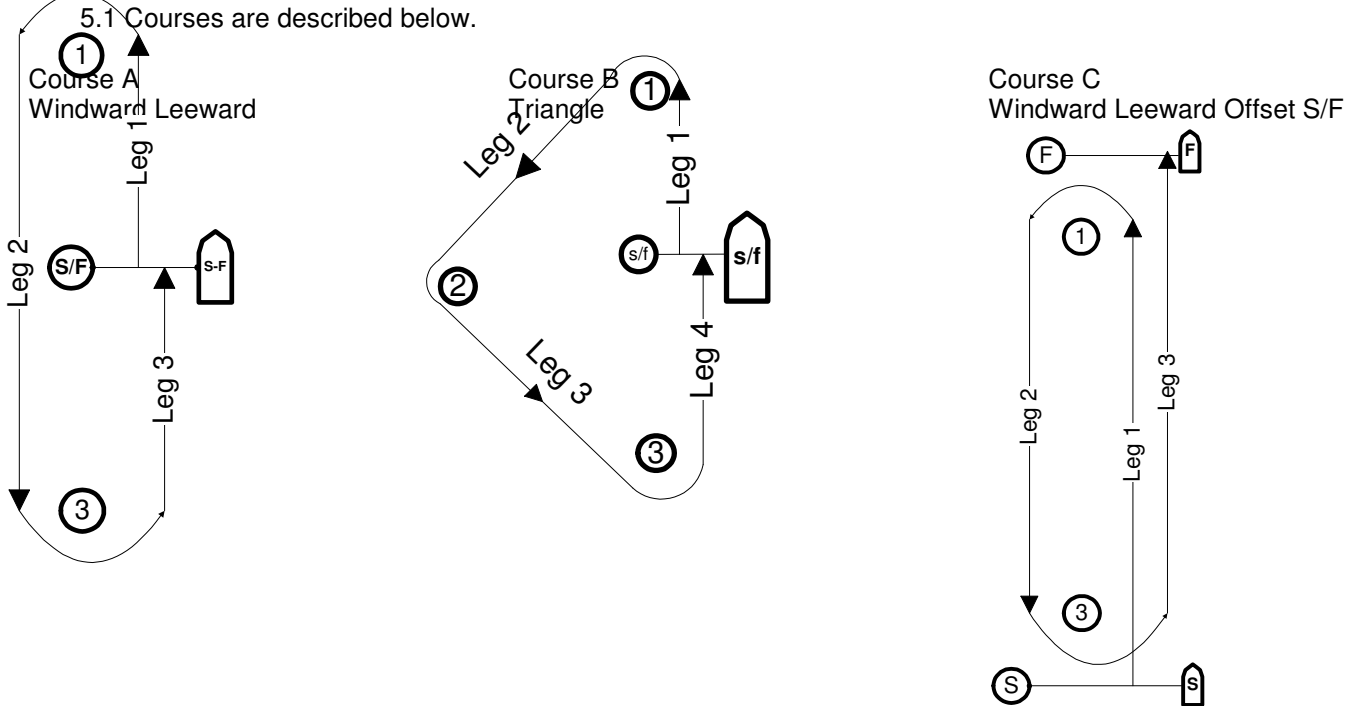
4.5 All boats intending to race will check-in with the Committee Boat between 1700 and 1725 hours using VHF channel 79 or by sailing under the Committee Boat's stern and announcing their intention to race.

4.6 Any boat abandoning the race should immediately notify the RC on channel 79 to avoid a post-race search for a lost boat.

4.7 See the NOR for rules regarding Eligibility and Entry.

## 5 Standard Courses

5.1 Courses are described below.



5.2 When the RC chooses a Standard Course, the Course Letter with compass bearing and approximate distance in nautical miles to the windward mark will be displayed on the course board atop the Committee Boat. If the Course is to be sailed twice-around, the Course Letter will be followed by the number '2', e.g. 'A 2' indicates Course A twice around.

5.3 Course Marks for Standard Courses are: for windward and leeward marks, large inflated yellow tetrahedrons; for a reaching mark, a large inflated orange tetrahedron.

5.4 The Starting Line will be between a staff on the Committee Boat bearing an orange flag and an inflated small orange tetrahedron. The RC will attempt to provide a start to windward.

5.5 The Finish Line for courses A and B will be the same as the Starting Line. The finish line for Course C will be as shown above.

5.6 If the first mark is a government mark, the appropriate letter from Section 6 of these SI's will be displayed following the course letter; e.g. 'A X S/F' indicates Standard Course A with X as the first mark; or 'B WR Y 2' indicates Standard Course B with WR as the first mark, twice around.

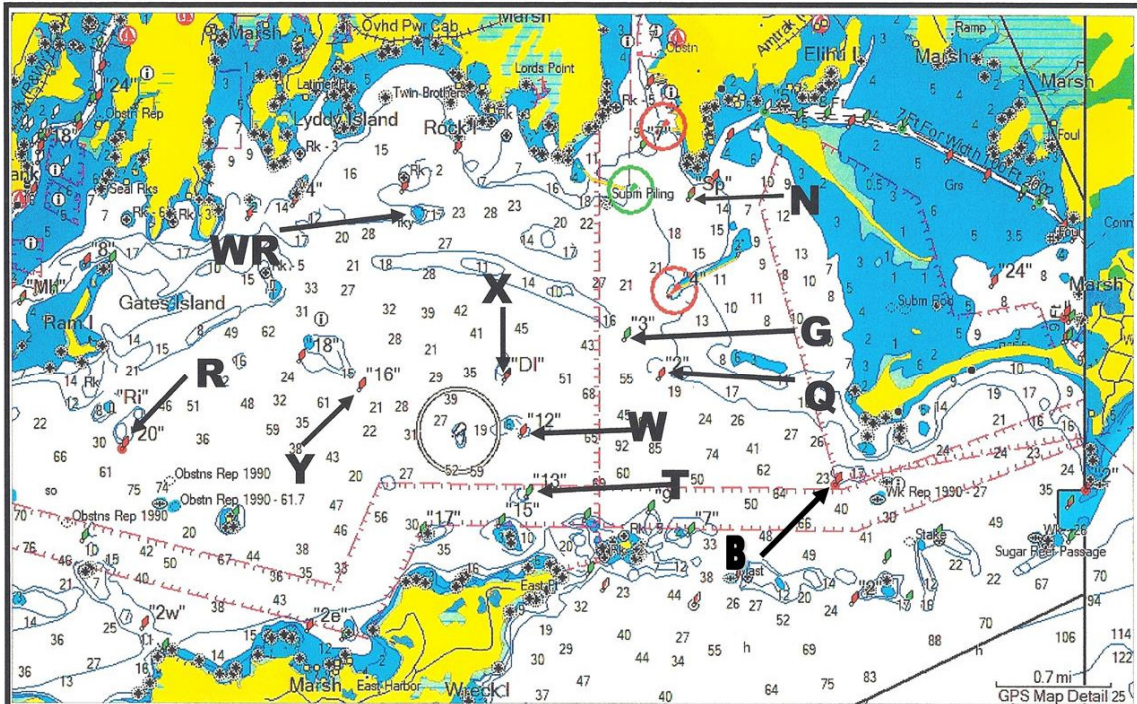
## 6 Course-Around Government Buoys

6.1 The RC may also choose Government Buoys as Course Marks. These Buoys and their assigned letters are shown below:

<u>Assigned Letter</u>	<u>Navigation Chart Designation</u>	<u>Buoy Location</u>
N	RG"SP"	Red and Green Nun 0.15 NM south of Stonington Point
G	G"3"	Green Gong 0.35 NM southwest of the horn on Bartlett Reef
Q	N"2"	Red Nun 0.45 NM south of the horn on Bartlett Reef
T	C"13"	Green Can 0.5 NM southeasterly from Latimer Light
W	N"12"	Red Nun 0.3 NM easterly from Latimer Light (mind the rock west of this mark)
X	C"DL"	Can 0.4 NM northeasterly of Latimer Light
Y	N"16"	Red Nun at southeast end of Eel Grass Ground

R	R"20"	Red Bell South of Ram Island Reef
WR	Rock	White Rock
B	R "6"	Red Bell Southwest of Napatree Point

### PHRF AND J/24 FLEET REFERENCE



**Gov't marks designated in Friday Twilight PHRF Series and J/24 fleet sailing instructions**

- 6.2 If Government Buoys are Marks of the Course, their assigned letters will be displayed on the Committee Boat Course Board in order of rounding. S/F indicates the start and finish line. Letters P(port) and S(starboard) indicate the side on which the buoy is to be left in rounding. Examples: R N P S/F, indicates Marks R and N, left to port, then to finish. R X P Y S S/F indicates Marks R and X to be left to port, Mark Y to starboard, then to finish.
- 6.3 The Starting Line will be between a staff on the Committee Boat bearing an orange flag and an orange inflated tetrahedron. The Finish Line will be the same as the Starting Line.
- 6.4 Restrictions: Boats may not pass south of Green Cans 9, 11, 15 and 17 at the north-eastern end of Fishers Island.
- 6.5 The RC may include one or more inflatable marks with one or more government marks for a course. The general location of the inflatable mark(s) will be announced on VHF 79 before the start of the class. The inflatable mark will be noted on the Course Board as mark 'IM'. An example course is: 'Y IM P S/F 2' which indicates the first mark is Y the second is the inflatable mark, both are left to port, twice around then finish. The RC will announce where IM is located which could be downwind of the Signal Boat or upwind of the Signal Boat. An inflatable mark may also be used as a wing mark; e.g. 'WR IM N P S/F 2' indicating WR is the first mark, the inflatable mark is the second mark, N is the third mark, all marks rounded to port, twice around. In this case the RC would announce IM is a wingmark on the left side of the course.
- 6.6 All Classes will sail the same course.

## 7 The Start

- 7.1 It is the intention of the RC to start three classes: **Class 1:** PHRF rated boats over 22 ft. loa; **Class 2:** One-design boats but only if 3 or more boats enter and indicate their intention to race; if less than three One-design appear they will race in Class 1 and the Race Committee will assign a rating consistent with the weather, **Class 3** NEMA rated multihulls.
- 7.2 All Classes will be started using the five minute sequence of RRS 26. There will be no rolling starts.

7.3 For the Start, the Class Flag will be Signal Pennant one for Class 1, Pennant two for Class 2, Pennant three for Class 3. Horn Sounds will supplement the raising and lowering of flags and pennants. Classes will be individually started using the 5 minute sequence of RRS Rule 26:

<u>Time Until Start</u>	<u>Signal</u>	<u>Flag</u>	<u>Sound</u>
5 minutes	First Warning	Class Pennant Up	1 Horn
4 minutes	Preparatory	'P' Flag Up	1 Horn
1 minute	One-Minute	'P' Flag Down	1 Long Horn
0 minutes	Start	Class pennant Down	1 Horn

7.6 Before the starting signal, any postponement will be indicated by display of pennant 'AP' with two Sounds.

7.7 Individual recalls will be signaled by flag 'X' and one horn blast (RRS 29.1) regardless of the number of boats being recalled. The RC will hail boats OCS on VHF channel 79. Recalled boats failing to restart will be assessed a 20 minute penalty to adjusted time. RRS 29.1 is modified accordingly

7.8 General recalls will be signaled in accordance with RRS 29.2. Warning signal for the recalled Class will be made one minute after the First Substitute signal is lowered.

7.9 Races will start in the area south of Wamphassuc Point.

## 8 Scoring

8.1 Scoring for PHRF boats will be time-on-time using the assigned ECSA-PHRF Rating. The Race Committee will assign a handicap rating to boats without an ECSA-PHRF rating certificate dated 2010 or later. Boats without such an acceptable rating certificate will be penalized four percent of adjusted time. The RC assigned rating may not be protested or appealed.

8.2 Each entered one-design class will be scored separately. Boats will be scored according to order of finish

8.3 Multihull boats will be scored time-on-time according to NEMA rules and scored as a Class.

8.4 Any boat not finishing the course by 1900 hours will be scored DNF.

8.5 Prizes will be awarded for each day's race at the shore party following the race. See NOR.

8.6 Trophies for the entire series will be awarded at SHYC Awards Night ceremony. In order to qualify for a series trophy, a boat must compete in four or more of the six races. Boats competing in four or more races will have their four best scores used in calculating their series score. Series scores will be determined by the low point system using each boat's ranking in each of her four best races. Separate awards will be made for PHRF, one-designs presenting three or more at the start and NEMA rated boats.

## 9 Protests

9.1 A boat that has taken a 360 degree penalty under RRS Rule 44.2 will notify the RC on VHF channel 79 immediately after finishing the race describing the incident and the other boat(s) involved.

9.2 A boat intending to file a protest will fly a red signal and, within an hour of docking, present RC a written protest detailing the parties involved and the RRS rules violated. RC will, within a week, assemble a Protest Committee, hear the protest and issue a decision. Any race in which a protest occurs will not be scored until the protest is decided.

## 10 Responsibility

10.1 Each boat's master will be responsible for the condition of his boat and its gear and equipment, including safety gear; for the capability of his crew and the conduct of his boat and its crew before, during and after the races. By entering any or all of these races, he acknowledges these responsibilities and that the SHYC, its Race Committee and individual members simply perform a service by providing a structure and venue in which he may or may not chose to race his boat. Each person aboard must sign a liability waiver available on-line ([www.shyc.us/racing](http://www.shyc.us/racing)) or at the Clubhouse unless he has, within the year, signed such a waiver. Each waiver is effective for one calendar year. See also RRS 4.

## 11 Shore Party

11.1 Prizes will be awarded at the Shore Party following each race. See the NOR for details.



## The Stonington Harbor Yacht Club

### 2018 Friday Twilight PHRF Race Series

**A Great Family Sailing Event to Kick Off Your Weekend**

**June 29 – August 24**

### **NOTICE OF RACE**

#### **1 Organizing Authority**

1.1 These races are organized by the Stonington Harbor Yacht Club (SHYC).

#### **2 Schedule of Races**

2.1 Races will be held Fridays from June 29th to August 24<sup>th</sup>. **First warning will be at 1730**

2.2 The Race Committee will conduct one race lasting approximately 1 to 1-1/2 hours each race day.

2.3 A minimum of 3 boats need to be registered by 12 noon on Friday for Race Committee to facilitate the race.

Registration link: <https://shyc.us/submaster.cfm?aPage=calendardetails.cfm&CallID=7038>

2.3 Delays will be announced on VHF channel 79 and indicated by the display of pennant AP on the Committee Boat  
2.4 Cancellation of the evening's race will be announced on VHF channel 79 every ten minutes between 1700 and 1800 hrs. on the race day. Cancellation notice may also be obtained by calling SHYC at 860-535-0112.

#### **3 Eligibility**

3.1 Races are open to all boats 22 ft. or more LOA with a valid PHRF-ECSA or NEMA rating. **All Sailors Welcome!**

#### **4 Classes**

4.1 Depending on the entries, the Race Committee may divide the fleet into two or more divisions. One-design boats 22 ft. LOA or longer will race and be handicapped as PHRF using established ECSA PHRF ratings for their Class; no rating certificate need be submitted but one-designs must meet Class Standards. A multi-hull class will be established for NEMA rated boats if three or more entries are received. Check scratch sheets for class/division assignments.

4.2 The scratch sheet will be available at the SHYC Clubhouse by 1200 on race days and from the Committee Boat (Galatea-II) or Mark Boat (Acis) up to 15 minutes before first warning each day.

#### **5 Entry**

5.1 Entry is by means of the standard SHYC Entry Form available in hard copy at the SHYC Clubhouse or on line at [www.shyc.us/racing](http://www.shyc.us/racing). The completed form accompanied by a check for the entry fee payable to SHYC and a valid PHRF-ECSA or NEMA rating certificate should be sent to SHYC, Attn. Race Committee, PO Box 87, Stonington, CT 06378, or delivered to the Clubhouse. Completed forms must be received by the entry deadline of noon on the Thursday before each race. Entry forms are valid for the 6-race series or for individual races but must specify which. Rating Certificates are valid for the season. Please note: This is an OPEN Race.

5.2 Entry Fee for members is \$150 for the race series or \$25 for a single race. Non-members \$165 for the series or \$35 for a single race.

#### **6 Rules**

6.1 Races will be governed by Racing Rules of Sailing, 2017-2020, as modified by this NOR and the SI's.

6.2 Cruising canvas only. No spinnakers of any type or headsails over 155 percent allowed.

#### **7 Course**

7.1 Races will be conducted in Fishers Island Sound, starting south of the Stonington breakwater and Wamphassuc Point. Courses will be described in the Sailing Instructions.

#### **8 Sailing Instructions**

8.1 Sailing instructions will be available in hard copy at the SHYC Clubhouse and on line at [www.shyc.us/racing](http://www.shyc.us/racing) by 0900 hrs. on the Thursday before each race.

#### **9 Awards**

9.1 After each race, small prizes for 1<sup>st</sup>, 2<sup>nd</sup> and 3<sup>rd</sup> places will be awarded at the shore party. Series awards will be presented at the SHYC awards night in October. A participant must compete in six of the nine races to be eligible for the series award. Low point scoring system (4 best results) will be used to determine series winner.

#### **10 Shore Party**

10.1 After each race, participants and their immediate families are invited to a reserved section of the Club patio for a fixed menu, self-serve buffet 'Racer's Dinner'. Approx. \$15 per person, reservations requested and can be made by committee boat.

#### **11 Additional Information**

11.1 See the SHYC Website at [www.shyc.us/racing](http://www.shyc.us/racing), or call the SHYC Clubhouse at (860) 535-0112.

11.2 All participants must sign a Liability Waiver form available at the Club or online. Waiver is good for the year.



## 2018 Friday Twilight PHRF Series June 29 through August 24th

# SAILING INSTRUCTIONS

### 1 Organizing Authority

1.1 These races are organized by the Stonington Harbor Yacht Club (SHYC).

### 2 Schedule of Races

2.1 Eligible boats will race each Friday from June 29<sup>th</sup> through August 24<sup>th</sup>.

2.2 First Warning will be at 1730 hrs.

2.3 The Race Committee intends to schedule races lasting 1 to 1-1/2 hours.

2.4 All boats intending to race must register through the online booking system by 12 noon on Friday.

2.5 A minimum of three boats need to be registered by 12 noon on Friday for Race Committee to facilitate the race. Registration link: <https://shyc.us/submaster.cfm?aPage=calendardetails.cfm&CallID=7038>

2.6 Delays will be announced on VHF channel 79 and indicated by the display of pennant AP on the Committee Boat.

2.7 Cancellation of the evening's race(s) will be announced on VHF channel 79 every ten minutes between 1630 and 1730 hours on the race day. Cancellation information may be obtained by calling the SHYC Clubhouse at (860) 535-0112.

### 3 Classes

3.1 PHRF rated boats other than one-designs will race as a class. If ten or more such boats enter, the Race Committee (RC) may divide the class into two or more divisions.

3.2 One-design boats will race in separate Classes. Any one-design class entering three or more boats will be assigned a Class on the Scratch Sheet and be given its own start. One-design boats must meet their class standards. One-designs must be 22 ft. loa or longer to participate.

3.3 If three or more multihull boats with NEMA Rating Certificates enter, they will race as a class. If fewer than three enter, they will be given a start approximately five minutes after the last Class but will not be scored.

3.4 Scratch Sheets with class/division assignments will be available at the SHYC Clubhouse prior to 1200 hours on race days and from the Committee Boat and Mark Boat up to 15 minutes before the First Warning signal.

### 4 Rules

4.1 Races will be governed by *Racing Rules of Sailing ,2017-2020* as modified by these *Sailing Instructions* (SI's) and the NOR.

4.2 Rules 44.1 and 44.2 will be changed to a penalty of one turn.

4.3 In the event of conflict between the NOR and these SI's, the SI's will govern. Changes to the SI's will be posted on the Club website [www.shyc.us/racing](http://www.shyc.us/racing) and Race News board in the Clubhouse by 1000 hours on race day. Hard copies will be available at the Clubhouse.

4.4 Cruising canvas only will be allowed; no spinnakers and only one headsail of 135% or less.

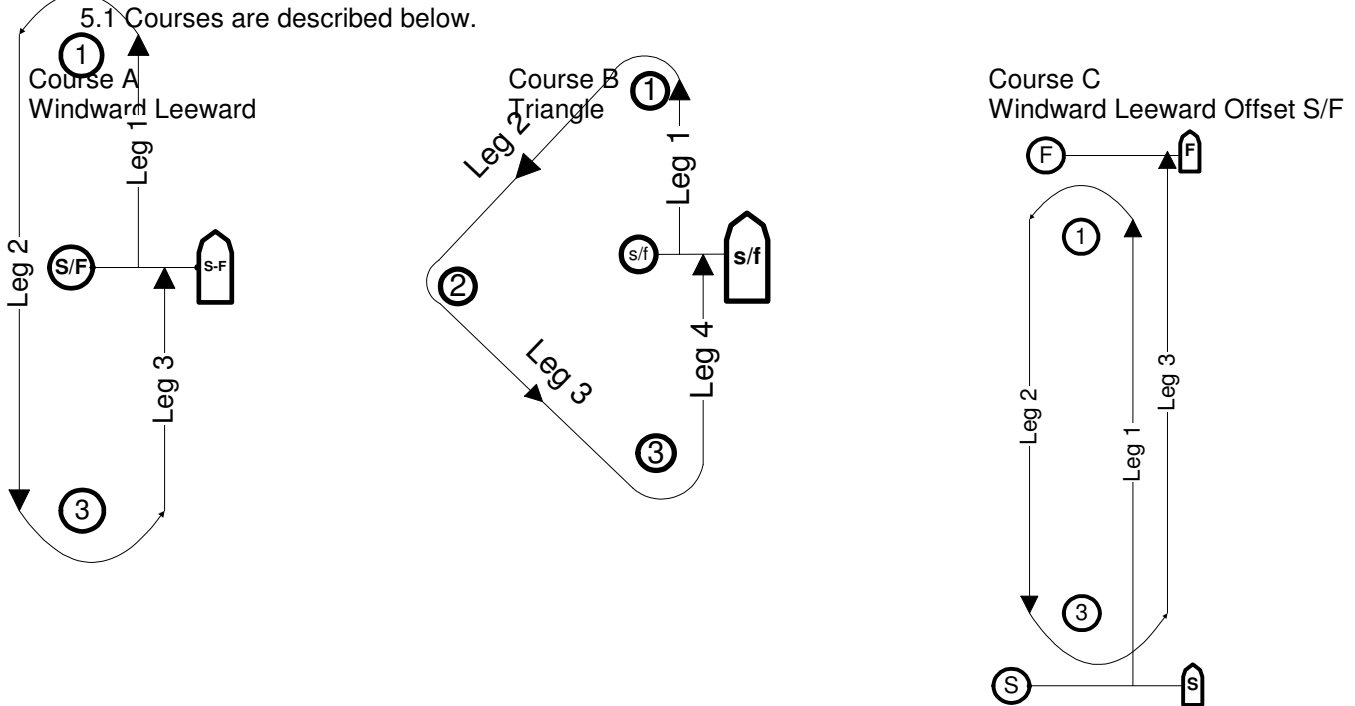
4.5 All boats intending to race will check-in with the Committee Boat between 1700 and 1725 hours using VHF channel 79 or by sailing under the Committee Boat's stern and announcing their intention to race.

4.6 Any boat abandoning the race should immediately notify the RC on channel 79 to avoid a post-race search for a lost boat.

4.7 See the NOR for rules regarding Eligibility and Entry.

## 5 Standard Courses

5.1 Courses are described below.



5.2 When the RC chooses a Standard Course, the Course Letter with compass bearing and approximate distance in nautical miles to the windward mark will be displayed on the course board atop the Committee Boat. If the Course is to be sailed twice-around, the Course Letter will be followed by the number '2', e.g. 'A 2' indicates Course A twice around.

5.3 Course Marks for Standard Courses are: for windward and leeward marks, large inflated yellow tetrahedrons; for a reaching mark, a large inflated orange tetrahedron.

5.4 The Starting Line will be between a staff on the Committee Boat bearing an orange flag and an inflated small orange tetrahedron. The RC will attempt to provide a start to windward.

5.5 The Finish Line for courses A and B will be the same as the Starting Line. The finish line for Course C will be as shown above.

5.6 If the first mark is a government mark, the appropriate letter from Section 6 of these SI's will be displayed following the course letter; e.g. 'A X S/F' indicates Standard Course A with X as the first mark; or 'B WR Y 2' indicates Standard Course B with WR as the first mark, twice around.

## 6 Course-Around Government Buoys

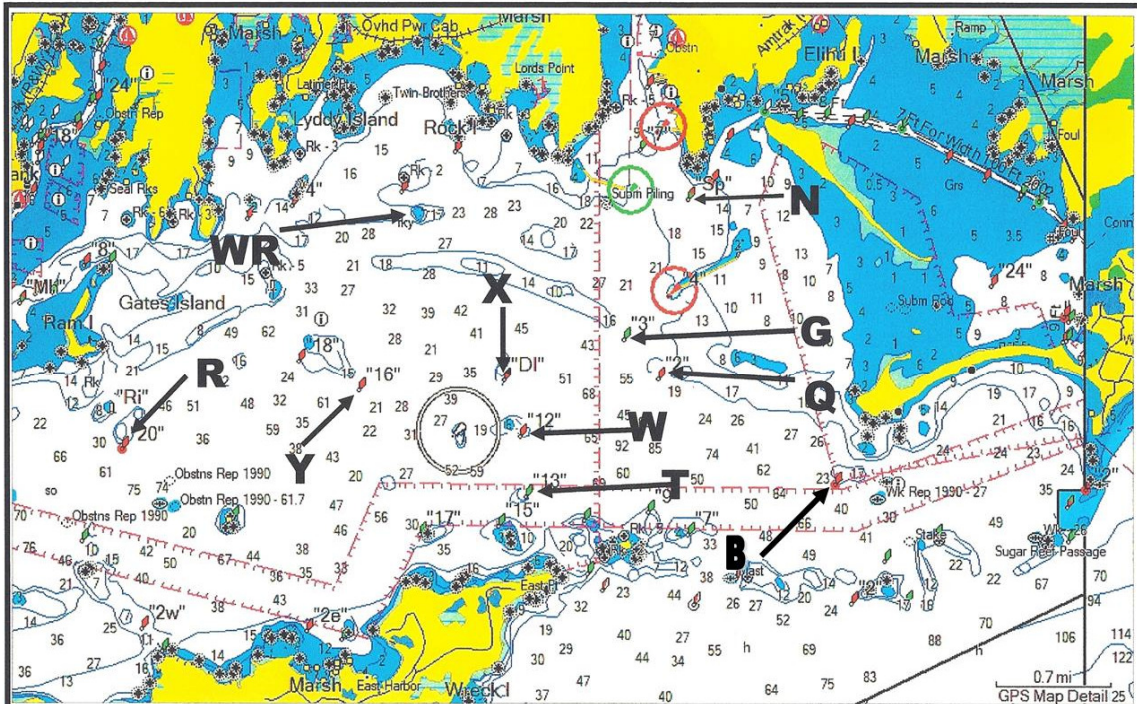
6.1 The RC may also choose Government Buoys as Course Marks. These Buoys and their assigned letters are shown below:

<u>Assigned Letter</u>	<u>Navigation Chart Designation</u>	<u>Buoy Location</u>
N	RG"SP"	Red and Green Nun 0.15 NM south of Stonington Point
G	G"3"	Green Gong 0.35 NM southwest of the horn on Bartlett Reef
Q	N"2"	Red Nun 0.45 NM south of the horn on Bartlett Reef
T	C"13"	Green Can 0.5 NM southeasterly from Latimer Light
W	N"12"	Red Nun 0.3 NM easterly from Latimer Light (mind the rock west of this mark)
X	C"DL"	Can 0.4 NM northeasterly of Latimer Light
Y	N"16"	Red Nun at southeast end of Eel Grass Ground



R	R"20"	Red Bell South of Ram Island Reef
WR	Rock	White Rock
B	R "6"	Red Bell Southwest of Napatree Point

### PHRF AND J/24 FLEET REFERENCE



**Gov't marks designated in Friday Twilight PHRF Series and J/24 fleet sailing instructions**

- 6.2 If Government Buoys are Marks of the Course, their assigned letters will be displayed on the Committee Boat Course Board in order of rounding. S/F indicates the start and finish line. Letters P(port) and S(starboard) indicate the side on which the buoy is to be left in rounding. Examples: R N P S/F, indicates Marks R and N, left to port, then to finish. R X P Y S S/F indicates Marks R and X to be left to port, Mark Y to starboard, then to finish.
- 6.3 The Starting Line will be between a staff on the Committee Boat bearing an orange flag and an orange inflated tetrahedron. The Finish Line will be the same as the Starting Line.
- 6.4 Restrictions: Boats may not pass south of Green Cans 9, 11, 15 and 17 at the north-eastern end of Fishers Island.
- 6.5 The RC may include one or more inflatable marks with one or more government marks for a course. The general location of the inflatable mark(s) will be announced on VHF 79 before the start of the class. The inflatable mark will be noted on the Course Board as mark 'IM'. An example course is: 'Y IM P S/F 2' which indicates the first mark is Y the second is the inflatable mark, both are left to port, twice around then finish. The RC will announce where IM is located which could be downwind of the Signal Boat or upwind of the Signal Boat. An inflatable mark may also be used as a wing mark; e.g. 'WR IM N P S/F 2' indicating WR is the first mark, the inflatable mark is the second mark, N is the third mark, all marks rounded to port, twice around. In this case the RC would announce IM is a wingmark on the left side of the course.
- 6.6 All Classes will sail the same course.

## 7 The Start

- 7.1 It is the intention of the RC to start three classes: **Class 1:** PHRF rated boats over 22 ft. loa; **Class 2:** One-design boats but only if 3 or more boats enter and indicate their intention to race; if less than three One-design appear they will race in Class 1 and the Race Committee will assign a rating consistent with the weather, **Class 3** NEMA rated multihulls.
- 7.2 All Classes will be started using the five minute sequence of RRS 26. There will be no rolling starts.

7.3 For the Start, the Class Flag will be Signal Pennant one for Class 1, Pennant two for Class 2, Pennant three for Class 3. Horn Sounds will supplement the raising and lowering of flags and pennants. Classes will be individually started using the 5 minute sequence of RRS Rule 26:

<u>Time Until Start</u>	<u>Signal</u>	<u>Flag</u>	<u>Sound</u>
5 minutes	First Warning	Class Pennant Up	1 Horn
4 minutes	Preparatory	'P' Flag Up	1 Horn
1 minute	One-Minute	'P' Flag Down	1 Long Horn
0 minutes	Start	Class pennant Down	1 Horn

7.6 Before the starting signal, any postponement will be indicated by display of pennant 'AP' with two Sounds.

7.7 Individual recalls will be signaled by flag 'X' and one horn blast (RRS 29.1) regardless of the number of boats being recalled. The RC will hail boats OCS on VHF channel 79. Recalled boats failing to restart will be assessed a 20 minute penalty to adjusted time. RRS 29.1 is modified accordingly

7.8 General recalls will be signaled in accordance with RRS 29.2. Warning signal for the recalled Class will be made one minute after the First Substitute signal is lowered.

7.9 Races will start in the area south of Wamphassuc Point.

## 8 Scoring

8.1 Scoring for PHRF boats will be time-on-time using the assigned ECSA-PHRF Rating. The Race Committee will assign a handicap rating to boats without an ECSA-PHRF rating certificate dated 2010 or later. Boats without such an acceptable rating certificate will be penalized four percent of adjusted time. The RC assigned rating may not be protested or appealed.

8.2 Each entered one-design class will be scored separately. Boats will be scored according to order of finish

8.3 Multihull boats will be scored time-on-time according to NEMA rules and scored as a Class.

8.4 Any boat not finishing the course by 1900 hours will be scored DNF.

8.5 Prizes will be awarded for each day's race at the shore party following the race. See NOR.

8.6 Trophies for the entire series will be awarded at SHYC Awards Night ceremony. In order to qualify for a series trophy, a boat must compete in four or more of the six races. Boats competing in four or more races will have their four best scores used in calculating their series score. Series scores will be determined by the low point system using each boat's ranking in each of her four best races. Separate awards will be made for PHRF, one-designs presenting three or more at the start and NEMA rated boats.

## 9 Protests

9.1 A boat that has taken a 360 degree penalty under RRS Rule 44.2 will notify the RC on VHF channel 79 immediately after finishing the race describing the incident and the other boat(s) involved.

9.2 A boat intending to file a protest will fly a red signal and, within an hour of docking, present RC a written protest detailing the parties involved and the RRS rules violated. RC will, within a week, assemble a Protest Committee, hear the protest and issue a decision. Any race in which a protest occurs will not be scored until the protest is decided.

## 10 Responsibility

10.1 Each boat's master will be responsible for the condition of his boat and its gear and equipment, including safety gear; for the capability of his crew and the conduct of his boat and its crew before, during and after the races. By entering any or all of these races, he acknowledges these responsibilities and that the SHYC, its Race Committee and individual members simply perform a service by providing a structure and venue in which he may or may not chose to race his boat. Each person aboard must sign a liability waiver available on-line ([www.shyc.us/racing](http://www.shyc.us/racing)) or at the Clubhouse unless he has, within the year, signed such a waiver. Each waiver is effective for one calendar year. See also RRS 4.

## 11 Shore Party

11.1 Prizes will be awarded at the Shore Party following each race. See the NOR for details.



## The Stonington Harbor Yacht Club

### 2018 Friday Twilight PHRF Race Series

**A Great Family Sailing Event to Kick Off Your Weekend**

**June 29 – August 24**

### **NOTICE OF RACE**

#### **1 Organizing Authority**

1.1 These races are organized by the Stonington Harbor Yacht Club (SHYC).

#### **2 Schedule of Races**

2.1 Races will be held Fridays from June 29th to August 24<sup>th</sup>. **First warning will be at 1730**

2.2 The Race Committee will conduct one race lasting approximately 1 to 1-1/2 hours each race day.

2.3 A minimum of 3 boats need to be registered by 12 noon on Friday for Race Committee to facilitate the race.

Registration link: <https://shyc.us/submaster.cfm?aPage=calendardetails.cfm&CallID=7038>

2.3 Delays will be announced on VHF channel 79 and indicated by the display of pennant AP on the Committee Boat  
2.4 Cancellation of the evening's race will be announced on VHF channel 79 every ten minutes between 1700 and 1800 hrs. on the race day. Cancellation notice may also be obtained by calling SHYC at 860-535-0112.

#### **3 Eligibility**

3.1 Races are open to all boats 22 ft. or more LOA with a valid PHRF-ECSA or NEMA rating. **All Sailors Welcome!**

#### **4 Classes**

4.1 Depending on the entries, the Race Committee may divide the fleet into two or more divisions. One-design boats 22 ft. LOA or longer will race and be handicapped as PHRF using established ECSA PHRF ratings for their Class; no rating certificate need be submitted but one-designs must meet Class Standards. A multi-hull class will be established for NEMA rated boats if three or more entries are received. Check scratch sheets for class/division assignments.

4.2 The scratch sheet will be available at the SHYC Clubhouse by 1200 on race days and from the Committee Boat (Galatea-II) or Mark Boat (Acis) up to 15 minutes before first warning each day.

#### **5 Entry**

5.1 Entry is by means of the standard SHYC Entry Form available in hard copy at the SHYC Clubhouse or on line at [www.shyc.us/racing](http://www.shyc.us/racing). The completed form accompanied by a check for the entry fee payable to SHYC and a valid PHRF-ECSA or NEMA rating certificate should be sent to SHYC, Attn. Race Committee, PO Box 87, Stonington, CT 06378, or delivered to the Clubhouse. Completed forms must be received by the entry deadline of noon on the Thursday before each race. Entry forms are valid for the 6-race series or for individual races but must specify which. Rating Certificates are valid for the season. Please note: This is an OPEN Race.

5.2 Entry Fee for members is \$150 for the race series or \$25 for a single race. Non-members \$165 for the series or \$35 for a single race.

#### **6 Rules**

6.1 Races will be governed by Racing Rules of Sailing, 2017-2020, as modified by this NOR and the SI's.

6.2 Cruising canvas only. No spinnakers of any type or headsails over 155 percent allowed.

#### **7 Course**

7.1 Races will be conducted in Fishers Island Sound, starting south of the Stonington breakwater and Wamphassuc Point. Courses will be described in the Sailing Instructions.

#### **8 Sailing Instructions**

8.1 Sailing instructions will be available in hard copy at the SHYC Clubhouse and on line at [www.shyc.us/racing](http://www.shyc.us/racing) by 0900 hrs. on the Thursday before each race.

#### **9 Awards**

9.1 After each race, small prizes for 1<sup>st</sup>, 2<sup>nd</sup> and 3<sup>rd</sup> places will be awarded at the shore party. Series awards will be presented at the SHYC awards night in October. A participant must compete in six of the nine races to be eligible for the series award. Low point scoring system (4 best results) will be used to determine series winner.

#### **10 Shore Party**

10.1 After each race, participants and their immediate families are invited to a reserved section of the Club patio for a fixed menu, self-serve buffet 'Racer's Dinner'. Approx. \$15 per person, reservations requested and can be made by committee boat.

#### **11 Additional Information**

11.1 See the SHYC Website at [www.shyc.us/racing](http://www.shyc.us/racing), or call the SHYC Clubhouse at (860) 535-0112.

11.2 All participants must sign a Liability Waiver form available at the Club or online. Waiver is good for the year.



## 2018 Friday Twilight PHRF Series June 29 through August 24th

# SAILING INSTRUCTIONS

### 1 Organizing Authority

1.1 These races are organized by the Stonington Harbor Yacht Club (SHYC).

### 2 Schedule of Races

2.1 Eligible boats will race each Friday from June 29<sup>th</sup> through August 24<sup>th</sup>.

2.2 First Warning will be at 1730 hrs.

2.3 The Race Committee intends to schedule races lasting 1 to 1-1/2 hours.

2.4 All boats intending to race must register through the online booking system by 12 noon on Friday.

2.5 A minimum of three boats need to be registered by 12 noon on Friday for Race Committee to facilitate the race. Registration link: <https://shyc.us/submaster.cfm?aPage=calendardetails.cfm&CallID=7038>

2.6 Delays will be announced on VHF channel 79 and indicated by the display of pennant AP on the Committee Boat.

2.7 Cancellation of the evening's race(s) will be announced on VHF channel 79 every ten minutes between 1630 and 1730 hours on the race day. Cancellation information may be obtained by calling the SHYC Clubhouse at (860) 535-0112.

### 3 Classes

3.1 PHRF rated boats other than one-designs will race as a class. If ten or more such boats enter, the Race Committee (RC) may divide the class into two or more divisions.

3.2 One-design boats will race in separate Classes. Any one-design class entering three or more boats will be assigned a Class on the Scratch Sheet and be given its own start. One-design boats must meet their class standards. One-designs must be 22 ft. loa or longer to participate.

3.3 If three or more multihull boats with NEMA Rating Certificates enter, they will race as a class. If fewer than three enter, they will be given a start approximately five minutes after the last Class but will not be scored.

3.4 Scratch Sheets with class/division assignments will be available at the SHYC Clubhouse prior to 1200 hours on race days and from the Committee Boat and Mark Boat up to 15 minutes before the First Warning signal.

### 4 Rules

4.1 Races will be governed by *Racing Rules of Sailing ,2017-2020* as modified by these *Sailing Instructions* (SI's) and the NOR.

4.2 Rules 44.1 and 44.2 will be changed to a penalty of one turn.

4.3 In the event of conflict between the NOR and these SI's, the SI's will govern. Changes to the SI's will be posted on the Club website [www.shyc.us/racing](http://www.shyc.us/racing) and Race News board in the Clubhouse by 1000 hours on race day. Hard copies will be available at the Clubhouse.

4.4 Cruising canvas only will be allowed; no spinnakers and only one headsail of 135% or less.

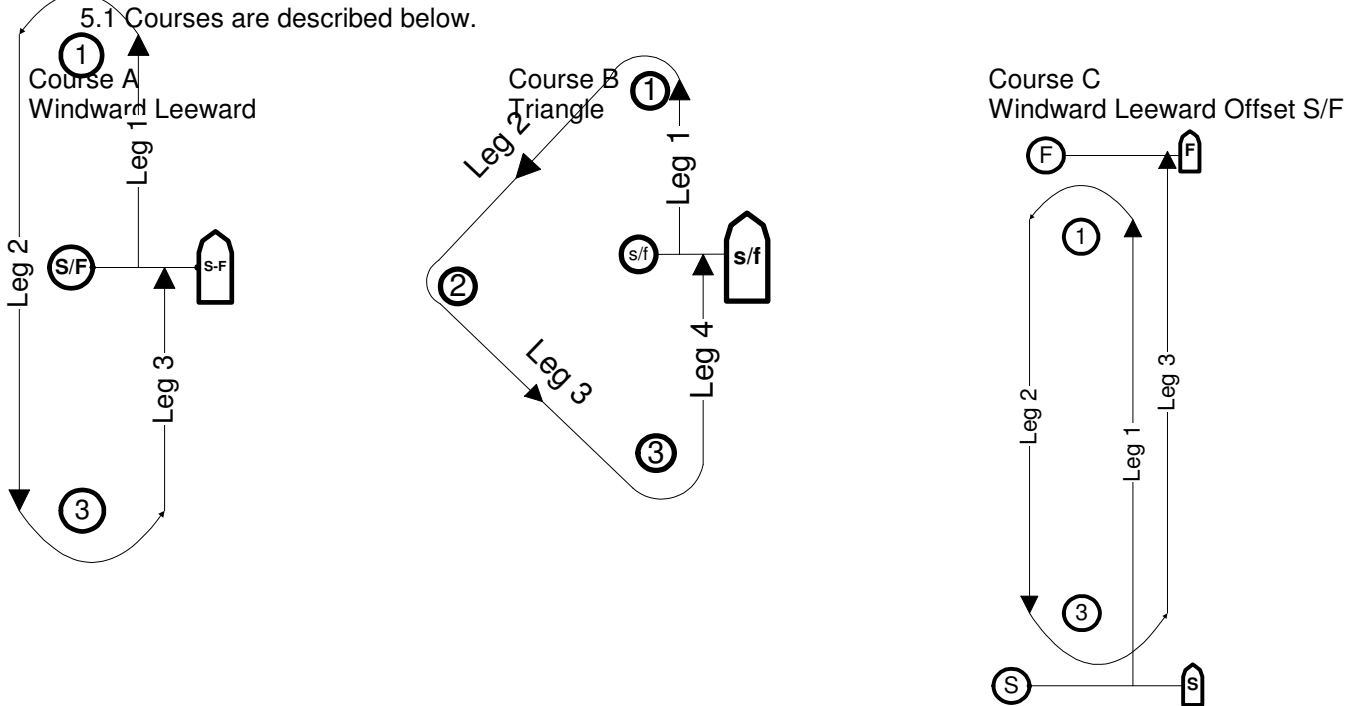
4.5 All boats intending to race will check-in with the Committee Boat between 1700 and 1725 hours using VHF channel 79 or by sailing under the Committee Boat's stern and announcing their intention to race.

4.6 Any boat abandoning the race should immediately notify the RC on channel 79 to avoid a post-race search for a lost boat.

4.7 See the NOR for rules regarding Eligibility and Entry.

## 5 Standard Courses

5.1 Courses are described below.



5.2 When the RC chooses a Standard Course, the Course Letter with compass bearing and approximate distance in nautical miles to the windward mark will be displayed on the course board atop the Committee Boat. If the Course is to be sailed twice-around, the Course Letter will be followed by the number '2', e.g. 'A 2' indicates Course A twice around.

5.3 Course Marks for Standard Courses are: for windward and leeward marks, large inflated yellow tetrahedrons; for a reaching mark, a large inflated orange tetrahedron.

5.4 The Starting Line will be between a staff on the Committee Boat bearing an orange flag and an inflated small orange tetrahedron. The RC will attempt to provide a start to windward.

5.5 The Finish Line for courses A and B will be the same as the Starting Line. The finish line for Course C will be as shown above.

5.6 If the first mark is a government mark, the appropriate letter from Section 6 of these SI's will be displayed following the course letter; e.g. 'A X S/F' indicates Standard Course A with X as the first mark; or 'B WR Y 2' indicates Standard Course B with WR as the first mark, twice around.

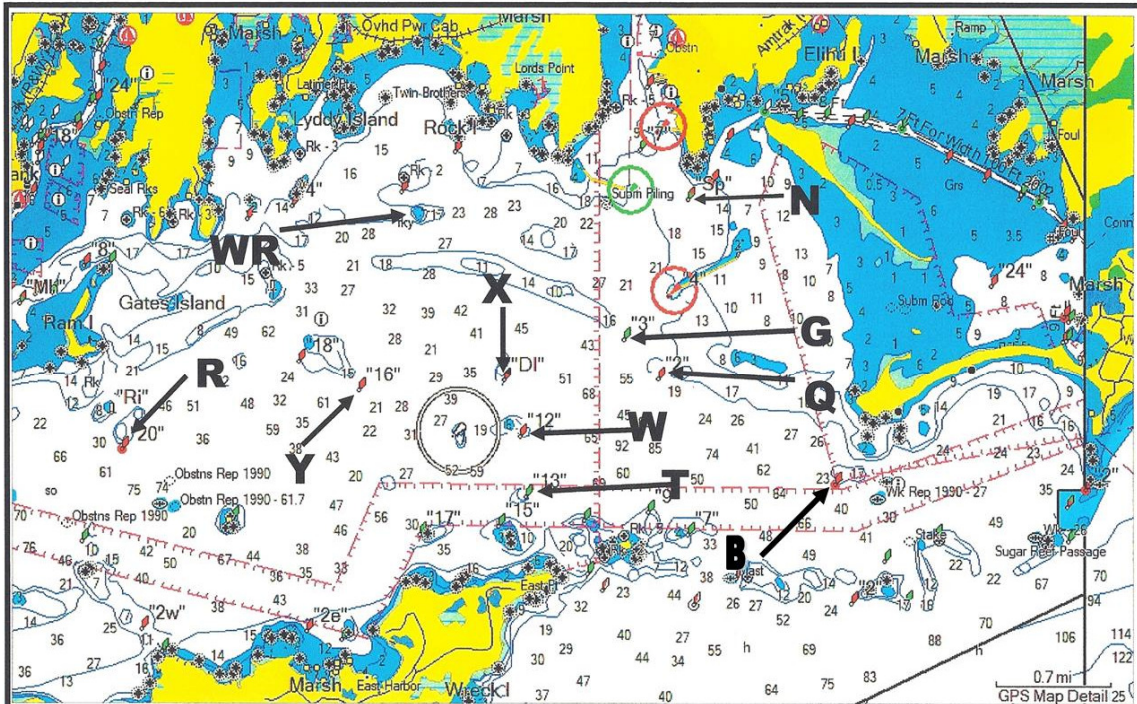
## 6 Course-Around Government Buoys

6.1 The RC may also choose Government Buoys as Course Marks. These Buoys and their assigned letters are shown below:

<u>Assigned Letter</u>	<u>Navigation Chart Designation</u>	<u>Buoy Location</u>
N	RG"SP"	Red and Green Nun 0.15 NM south of Stonington Point
G	G"3"	Green Gong 0.35 NM southwest of the horn on Bartlett Reef
Q	N"2"	Red Nun 0.45 NM south of the horn on Bartlett Reef
T	C"13"	Green Can 0.5 NM southeasterly from Latimer Light
W	N"12"	Red Nun 0.3 NM easterly from Latimer Light (mind the rock west of this mark)
X	C"DL"	Can 0.4 NM northeasterly of Latimer Light
Y	N"16"	Red Nun at southeast end of Eel Grass Ground

R	R"20"	Red Bell South of Ram Island Reef
WR	Rock	White Rock
B	R "6"	Red Bell Southwest of Napatree Point

### PHRF AND J/24 FLEET REFERENCE



**Gov't marks designated in Friday Twilight PHRF Series and J/24 fleet sailing instructions**

- 6.2 If Government Buoys are Marks of the Course, their assigned letters will be displayed on the Committee Boat Course Board in order of rounding. S/F indicates the start and finish line. Letters P(port) and S(starboard) indicate the side on which the buoy is to be left in rounding. Examples: R N P S/F, indicates Marks R and N, left to port, then to finish. R X P Y S S/F indicates Marks R and X to be left to port, Mark Y to starboard, then to finish.
- 6.3 The Starting Line will be between a staff on the Committee Boat bearing an orange flag and an orange inflated tetrahedron. The Finish Line will be the same as the Starting Line.
- 6.4 Restrictions: Boats may not pass south of Green Cans 9, 11, 15 and 17 at the north-eastern end of Fishers Island.
- 6.5 The RC may include one or more inflatable marks with one or more government marks for a course. The general location of the inflatable mark(s) will be announced on VHF 79 before the start of the class. The inflatable mark will be noted on the Course Board as mark 'IM'. An example course is: 'Y IM P S/F 2' which indicates the first mark is Y the second is the inflatable mark, both are left to port, twice around then finish. The RC will announce where IM is located which could be downwind of the Signal Boat or upwind of the Signal Boat. An inflatable mark may also be used as a wing mark; e.g. 'WR IM N P S/F 2' indicating WR is the first mark, the inflatable mark is the second mark, N is the third mark, all marks rounded to port, twice around. In this case the RC would announce IM is a wingmark on the left side of the course.
- 6.6 All Classes will sail the same course.

## 7 The Start

- 7.1 It is the intention of the RC to start three classes: **Class 1:** PHRF rated boats over 22 ft. loa; **Class 2:** One-design boats but only if 3 or more boats enter and indicate their intention to race; if less than three One-design appear they will race in Class 1 and the Race Committee will assign a rating consistent with the weather, **Class 3** NEMA rated multihulls.
- 7.2 All Classes will be started using the five minute sequence of RRS 26. There will be no rolling starts.

7.3 For the Start, the Class Flag will be Signal Pennant one for Class 1, Pennant two for Class 2, Pennant three for Class 3. Horn Sounds will supplement the raising and lowering of flags and pennants. Classes will be individually started using the 5 minute sequence of RRS Rule 26:

<u>Time Until Start</u>	<u>Signal</u>	<u>Flag</u>	<u>Sound</u>
5 minutes	First Warning	Class Pennant Up	1 Horn
4 minutes	Preparatory	'P' Flag Up	1 Horn
1 minute	One-Minute	'P' Flag Down	1 Long Horn
0 minutes	Start	Class pennant Down	1 Horn

7.6 Before the starting signal, any postponement will be indicated by display of pennant 'AP' with two Sounds.

7.7 Individual recalls will be signaled by flag 'X' and one horn blast (RRS 29.1) regardless of the number of boats being recalled. The RC will hail boats OCS on VHF channel 79. Recalled boats failing to restart will be assessed a 20 minute penalty to adjusted time. RRS 29.1 is modified accordingly

7.8 General recalls will be signaled in accordance with RRS 29.2. Warning signal for the recalled Class will be made one minute after the First Substitute signal is lowered.

7.9 Races will start in the area south of Wamphassuc Point.

## 8 Scoring

8.1 Scoring for PHRF boats will be time-on-time using the assigned ECSA-PHRF Rating. The Race Committee will assign a handicap rating to boats without an ECSA-PHRF rating certificate dated 2010 or later. Boats without such an acceptable rating certificate will be penalized four percent of adjusted time. The RC assigned rating may not be protested or appealed.

8.2 Each entered one-design class will be scored separately. Boats will be scored according to order of finish

8.3 Multihull boats will be scored time-on-time according to NEMA rules and scored as a Class.

8.4 Any boat not finishing the course by 1900 hours will be scored DNF.

8.5 Prizes will be awarded for each day's race at the shore party following the race. See NOR.

8.6 Trophies for the entire series will be awarded at SHYC Awards Night ceremony. In order to qualify for a series trophy, a boat must compete in four or more of the six races. Boats competing in four or more races will have their four best scores used in calculating their series score. Series scores will be determined by the low point system using each boat's ranking in each of her four best races. Separate awards will be made for PHRF, one-designs presenting three or more at the start and NEMA rated boats.

## 9 Protests

9.1 A boat that has taken a 360 degree penalty under RRS Rule 44.2 will notify the RC on VHF channel 79 immediately after finishing the race describing the incident and the other boat(s) involved.

9.2 A boat intending to file a protest will fly a red signal and, within an hour of docking, present RC a written protest detailing the parties involved and the RRS rules violated. RC will, within a week, assemble a Protest Committee, hear the protest and issue a decision. Any race in which a protest occurs will not be scored until the protest is decided.

## 10 Responsibility

10.1 Each boat's master will be responsible for the condition of his boat and its gear and equipment, including safety gear; for the capability of his crew and the conduct of his boat and its crew before, during and after the races. By entering any or all of these races, he acknowledges these responsibilities and that the SHYC, its Race Committee and individual members simply perform a service by providing a structure and venue in which he may or may not chose to race his boat. Each person aboard must sign a liability waiver available on-line ([www.shyc.us/racing](http://www.shyc.us/racing)) or at the Clubhouse unless he has, within the year, signed such a waiver. Each waiver is effective for one calendar year. See also RRS 4.

## 11 Shore Party

11.1 Prizes will be awarded at the Shore Party following each race. See the NOR for details.



## The Stonington Harbor Yacht Club

### 2018 Friday Twilight PHRF Race Series

**A Great Family Sailing Event to Kick Off Your Weekend**

**June 29 – August 24**

### **NOTICE OF RACE**

#### **1 Organizing Authority**

1.1 These races are organized by the Stonington Harbor Yacht Club (SHYC).

#### **2 Schedule of Races**

2.1 Races will be held Fridays from June 29th to August 24<sup>th</sup>. **First warning will be at 1730**

2.2 The Race Committee will conduct one race lasting approximately 1 to 1-1/2 hours each race day.

2.3 A minimum of 3 boats need to be registered by 12 noon on Friday for Race Committee to facilitate the race.

Registration link: <https://shyc.us/submaster.cfm?aPage=calendardetails.cfm&CallID=7038>

2.3 Delays will be announced on VHF channel 79 and indicated by the display of pennant AP on the Committee Boat  
2.4 Cancellation of the evening's race will be announced on VHF channel 79 every ten minutes between 1700 and 1800 hrs. on the race day. Cancellation notice may also be obtained by calling SHYC at 860-535-0112.

#### **3 Eligibility**

3.1 Races are open to all boats 22 ft. or more LOA with a valid PHRF-ECSA or NEMA rating. **All Sailors Welcome!**

#### **4 Classes**

4.1 Depending on the entries, the Race Committee may divide the fleet into two or more divisions. One-design boats 22 ft. LOA or longer will race and be handicapped as PHRF using established ECSA PHRF ratings for their Class; no rating certificate need be submitted but one-designs must meet Class Standards. A multi-hull class will be established for NEMA rated boats if three or more entries are received. Check scratch sheets for class/division assignments.

4.2 The scratch sheet will be available at the SHYC Clubhouse by 1200 on race days and from the Committee Boat (Galatea-II) or Mark Boat (Acis) up to 15 minutes before first warning each day.

#### **5 Entry**

5.1 Entry is by means of the standard SHYC Entry Form available in hard copy at the SHYC Clubhouse or on line at [www.shyc.us/racing](http://www.shyc.us/racing). The completed form accompanied by a check for the entry fee payable to SHYC and a valid PHRF-ECSA or NEMA rating certificate should be sent to SHYC, Attn. Race Committee, PO Box 87, Stonington, CT 06378, or delivered to the Clubhouse. Completed forms must be received by the entry deadline of noon on the Thursday before each race. Entry forms are valid for the 6-race series or for individual races but must specify which. Rating Certificates are valid for the season. Please note: This is an OPEN Race.

5.2 Entry Fee for members is \$150 for the race series or \$25 for a single race. Non-members \$165 for the series or \$35 for a single race.

#### **6 Rules**

6.1 Races will be governed by Racing Rules of Sailing, 2017-2020, as modified by this NOR and the SI's.

6.2 Cruising canvas only. No spinnakers of any type or headsails over 155 percent allowed.

#### **7 Course**

7.1 Races will be conducted in Fishers Island Sound, starting south of the Stonington breakwater and Wamphassuc Point. Courses will be described in the Sailing Instructions.

#### **8 Sailing Instructions**

8.1 Sailing instructions will be available in hard copy at the SHYC Clubhouse and on line at [www.shyc.us/racing](http://www.shyc.us/racing) by 0900 hrs. on the Thursday before each race.

#### **9 Awards**

9.1 After each race, small prizes for 1<sup>st</sup>, 2<sup>nd</sup> and 3<sup>rd</sup> places will be awarded at the shore party. Series awards will be presented at the SHYC awards night in October. A participant must compete in six of the nine races to be eligible for the series award. Low point scoring system (4 best results) will be used to determine series winner.

#### **10 Shore Party**

10.1 After each race, participants and their immediate families are invited to a reserved section of the Club patio for a fixed menu, self-serve buffet 'Racer's Dinner'. Approx. \$15 per person, reservations requested and can be made by committee boat.

#### **11 Additional Information**



11.1 See the SHYC Website at [www.shyc.us/racing](http://www.shyc.us/racing), or call the SHYC Clubhouse at (860) 535-0112.

11.2 All participants must sign a Liability Waiver form available at the Club or online. Waiver is good for the year.



## 2018 Friday Twilight PHRF Series June 29 through August 24th

# SAILING INSTRUCTIONS

### 1 Organizing Authority

1.1 These races are organized by the Stonington Harbor Yacht Club (SHYC).

### 2 Schedule of Races

2.1 Eligible boats will race each Friday from June 29<sup>th</sup> through August 24<sup>th</sup>.

2.2 First Warning will be at 1730 hrs.

2.3 The Race Committee intends to schedule races lasting 1 to 1-1/2 hours.

2.4 All boats intending to race must register through the online booking system by 12 noon on Friday.

2.5 A minimum of three boats need to be registered by 12 noon on Friday for Race Committee to facilitate the race. Registration link: <https://shyc.us/submaster.cfm?aPage=calendardetails.cfm&CallID=7038>

2.6 Delays will be announced on VHF channel 79 and indicated by the display of pennant AP on the Committee Boat.

2.7 Cancellation of the evening's race(s) will be announced on VHF channel 79 every ten minutes between 1630 and 1730 hours on the race day. Cancellation information may be obtained by calling the SHYC Clubhouse at (860) 535-0112.

### 3 Classes

3.1 PHRF rated boats other than one-designs will race as a class. If ten or more such boats enter, the Race Committee (RC) may divide the class into two or more divisions.

3.2 One-design boats will race in separate Classes. Any one-design class entering three or more boats will be assigned a Class on the Scratch Sheet and be given its own start. One-design boats must meet their class standards. One-designs must be 22 ft. loa or longer to participate.

3.3 If three or more multihull boats with NEMA Rating Certificates enter, they will race as a class. If fewer than three enter, they will be given a start approximately five minutes after the last Class but will not be scored.

3.4 Scratch Sheets with class/division assignments will be available at the SHYC Clubhouse prior to 1200 hours on race days and from the Committee Boat and Mark Boat up to 15 minutes before the First Warning signal.

### 4 Rules

4.1 Races will be governed by *Racing Rules of Sailing ,2017-2020* as modified by these *Sailing Instructions* (SI's) and the NOR.

4.2 Rules 44.1 and 44.2 will be changed to a penalty of one turn.

4.3 In the event of conflict between the NOR and these SI's, the SI's will govern. Changes to the SI's will be posted on the Club website [www.shyc.us/racing](http://www.shyc.us/racing) and Race News board in the Clubhouse by 1000 hours on race day. Hard copies will be available at the Clubhouse.

4.4 Cruising canvas only will be allowed; no spinnakers and only one headsail of 135% or less.

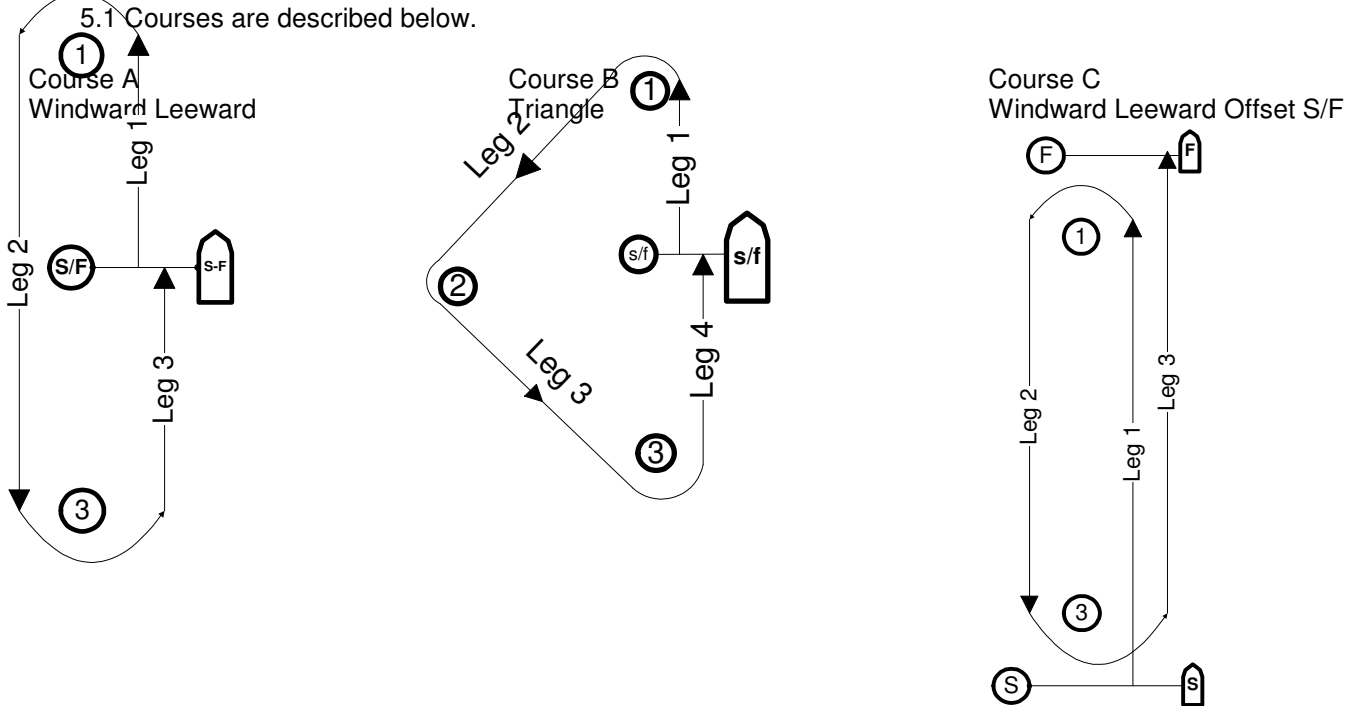
4.5 All boats intending to race will check-in with the Committee Boat between 1700 and 1725 hours using VHF channel 79 or by sailing under the Committee Boat's stern and announcing their intention to race.

4.6 Any boat abandoning the race should immediately notify the RC on channel 79 to avoid a post-race search for a lost boat.

4.7 See the NOR for rules regarding Eligibility and Entry.

## 5 Standard Courses

5.1 Courses are described below.



5.2 When the RC chooses a Standard Course, the Course Letter with compass bearing and approximate distance in nautical miles to the windward mark will be displayed on the course board atop the Committee Boat. If the Course is to be sailed twice-around, the Course Letter will be followed by the number '2', e.g. 'A 2' indicates Course A twice around.

5.3 Course Marks for Standard Courses are: for windward and leeward marks, large inflated yellow tetrahedrons; for a reaching mark, a large inflated orange tetrahedron.

5.4 The Starting Line will be between a staff on the Committee Boat bearing an orange flag and an inflated small orange tetrahedron. The RC will attempt to provide a start to windward.

5.5 The Finish Line for courses A and B will be the same as the Starting Line. The finish line for Course C will be as shown above.

5.6 If the first mark is a government mark, the appropriate letter from Section 6 of these SI's will be displayed following the course letter; e.g. 'A X S/F' indicates Standard Course A with X as the first mark; or 'B WR Y 2' indicates Standard Course B with WR as the first mark, twice around.

## 6 Course-Around Government Buoys

6.1 The RC may also choose Government Buoys as Course Marks. These Buoys and their assigned letters are shown below:

<u>Assigned Letter</u>	<u>Navigation Chart Designation</u>	<u>Buoy Location</u>
N	RG"SP"	Red and Green Nun 0.15 NM south of Stonington Point
G	G"3"	Green Gong 0.35 NM southwest of the horn on Bartlett Reef
Q	N"2"	Red Nun 0.45 NM south of the horn on Bartlett Reef
T	C"13"	Green Can 0.5 NM southeasterly from Latimer Light
W	N"12"	Red Nun 0.3 NM easterly from Latimer Light (mind the rock west of this mark)
X	C"DL"	Can 0.4 NM northeasterly of Latimer Light
Y	N"16"	Red Nun at southeast end of Eel Grass Ground



7.3 For the Start, the Class Flag will be Signal Pennant one for Class 1, Pennant two for Class 2, Pennant three for Class 3. Horn Sounds will supplement the raising and lowering of flags and pennants. Classes will be individually started using the 5 minute sequence of RRS Rule 26:

<u>Time Until Start</u>	<u>Signal</u>	<u>Flag</u>	<u>Sound</u>
5 minutes	First Warning	Class Pennant Up	1 Horn
4 minutes	Preparatory	'P' Flag Up	1 Horn
1 minute	One-Minute	'P' Flag Down	1 Long Horn
0 minutes	Start	Class pennant Down	1 Horn

7.6 Before the starting signal, any postponement will be indicated by display of pennant 'AP' with two Sounds.

7.7 Individual recalls will be signaled by flag 'X' and one horn blast (RRS 29.1) regardless of the number of boats being recalled. The RC will hail boats OCS on VHF channel 79. Recalled boats failing to restart will be assessed a 20 minute penalty to adjusted time. RRS 29.1 is modified accordingly

7.8 General recalls will be signaled in accordance with RRS 29.2. Warning signal for the recalled Class will be made one minute after the First Substitute signal is lowered.

7.9 Races will start in the area south of Wamphassuc Point.

## 8 Scoring

8.1 Scoring for PHRF boats will be time-on-time using the assigned ECSA-PHRF Rating. The Race Committee will assign a handicap rating to boats without an ECSA-PHRF rating certificate dated 2010 or later. Boats without such an acceptable rating certificate will be penalized four percent of adjusted time. The RC assigned rating may not be protested or appealed.

8.2 Each entered one-design class will be scored separately. Boats will be scored according to order of finish

8.3 Multihull boats will be scored time-on-time according to NEMA rules and scored as a Class.

8.4 Any boat not finishing the course by 1900 hours will be scored DNF.

8.5 Prizes will be awarded for each day's race at the shore party following the race. See NOR.

8.6 Trophies for the entire series will be awarded at SHYC Awards Night ceremony. In order to qualify for a series trophy, a boat must compete in four or more of the six races. Boats competing in four or more races will have their four best scores used in calculating their series score. Series scores will be determined by the low point system using each boat's ranking in each of her four best races. Separate awards will be made for PHRF, one-designs presenting three or more at the start and NEMA rated boats.

## 9 Protests

9.1 A boat that has taken a 360 degree penalty under RRS Rule 44.2 will notify the RC on VHF channel 79 immediately after finishing the race describing the incident and the other boat(s) involved.

9.2 A boat intending to file a protest will fly a red signal and, within an hour of docking, present RC a written protest detailing the parties involved and the RRS rules violated. RC will, within a week, assemble a Protest Committee, hear the protest and issue a decision. Any race in which a protest occurs will not be scored until the protest is decided.

## 10 Responsibility

10.1 Each boat's master will be responsible for the condition of his boat and its gear and equipment, including safety gear; for the capability of his crew and the conduct of his boat and its crew before, during and after the races. By entering any or all of these races, he acknowledges these responsibilities and that the SHYC, its Race Committee and individual members simply perform a service by providing a structure and venue in which he may or may not chose to race his boat. Each person aboard must sign a liability waiver available on-line ([www.shyc.us/racing](http://www.shyc.us/racing)) or at the Clubhouse unless he has, within the year, signed such a waiver. Each waiver is effective for one calendar year. See also RRS 4.

## 11 Shore Party

11.1 Prizes will be awarded at the Shore Party following each race. See the NOR for details.



## The Stonington Harbor Yacht Club

### 2018 Friday Twilight PHRF Race Series

**A Great Family Sailing Event to Kick Off Your Weekend**

**June 29 – August 24**

### **NOTICE OF RACE**

#### **1 Organizing Authority**

1.1 These races are organized by the Stonington Harbor Yacht Club (SHYC).

#### **2 Schedule of Races**

2.1 Races will be held Fridays from June 29th to August 24<sup>th</sup>. **First warning will be at 1730**

2.2 The Race Committee will conduct one race lasting approximately 1 to 1-1/2 hours each race day.

2.3 A minimum of 3 boats need to be registered by 12 noon on Friday for Race Committee to facilitate the race.

Registration link: <https://shyc.us/submaster.cfm?aPage=calendardetails.cfm&CallID=7038>

2.3 Delays will be announced on VHF channel 79 and indicated by the display of pennant AP on the Committee Boat

2.4 Cancellation of the evening's race will be announced on VHF channel 79 every ten minutes between 1700 and 1800 hrs. on the race day. Cancellation notice may also be obtained by calling SHYC at 860-535-0112.

#### **3 Eligibility**

3.1 Races are open to all boats 22 ft. or more LOA with a valid PHRF-ECSA or NEMA rating. **All Sailors Welcome!**

#### **4 Classes**

4.1 Depending on the entries, the Race Committee may divide the fleet into two or more divisions. One-design boats 22 ft. LOA or longer will race and be handicapped as PHRF using established ECSA PHRF ratings for their Class; no rating certificate need be submitted but one-designs must meet Class Standards. A multi-hull class will be established for NEMA rated boats if three or more entries are received. Check scratch sheets for class/division assignments.

4.2 The scratch sheet will be available at the SHYC Clubhouse by 1200 on race days and from the Committee Boat (Galatea-II) or Mark Boat (Acis) up to 15 minutes before first warning each day.

#### **5 Entry**

5.1 Entry is by means of the standard SHYC Entry Form available in hard copy at the SHYC Clubhouse or on line at [www.shyc.us/racing](http://www.shyc.us/racing). The completed form accompanied by a check for the entry fee payable to SHYC and a valid PHRF-ECSA or NEMA rating certificate should be sent to SHYC, Attn. Race Committee, PO Box 87, Stonington, CT 06378, or delivered to the Clubhouse. Completed forms must be received by the entry deadline of noon on the Thursday before each race. Entry forms are valid for the 6-race series or for individual races but must specify which. Rating Certificates are valid for the season. Please note: This is an OPEN Race.

5.2 Entry Fee for members is \$150 for the race series or \$25 for a single race. Non-members \$165 for the series or \$35 for a single race.

#### **6 Rules**

6.1 Races will be governed by Racing Rules of Sailing, 2017-2020, as modified by this NOR and the SI's.

6.2 Cruising canvas only. No spinnakers of any type or headsails over 155 percent allowed.

#### **7 Course**

7.1 Races will be conducted in Fishers Island Sound, starting south of the Stonington breakwater and Wamphassuc Point. Courses will be described in the Sailing Instructions.

#### **8 Sailing Instructions**

8.1 Sailing instructions will be available in hard copy at the SHYC Clubhouse and on line at [www.shyc.us/racing](http://www.shyc.us/racing) by 0900 hrs. on the Thursday before each race.

#### **9 Awards**

9.1 After each race, small prizes for 1<sup>st</sup>, 2<sup>nd</sup> and 3<sup>rd</sup> places will be awarded at the shore party. Series awards will be presented at the SHYC awards night in October. A participant must compete in six of the nine races to be eligible for the series award. Low point scoring system (4 best results) will be used to determine series winner.

#### **10 Shore Party**

10.1 After each race, participants and their immediate families are invited to a reserved section of the Club patio for a fixed menu, self-serve buffet 'Racer's Dinner'. Approx. \$15 per person, reservations requested and can be made by committee boat.

#### **11 Additional Information**

11.1 See the SHYC Website at [www.shyc.us/racing](http://www.shyc.us/racing), or call the SHYC Clubhouse at (860) 535-0112.

11.2 All participants must sign a Liability Waiver form available at the Club or online. Waiver is good for the year.



## 2018 Friday Twilight PHRF Series June 29 through August 24th

# SAILING INSTRUCTIONS

### 1 Organizing Authority

1.1 These races are organized by the Stonington Harbor Yacht Club (SHYC).

### 2 Schedule of Races

2.1 Eligible boats will race each Friday from June 29<sup>th</sup> through August 24<sup>th</sup>.

2.2 First Warning will be at 1730 hrs.

2.3 The Race Committee intends to schedule races lasting 1 to 1-1/2 hours.

2.4 All boats intending to race must register through the online booking system by 12 noon on Friday.

2.5 A minimum of three boats need to be registered by 12 noon on Friday for Race Committee to facilitate the race. Registration link: <https://shyc.us/submaster.cfm?aPage=calendardetails.cfm&CallID=7038>

2.6 Delays will be announced on VHF channel 79 and indicated by the display of pennant AP on the Committee Boat.

2.7 Cancellation of the evening's race(s) will be announced on VHF channel 79 every ten minutes between 1630 and 1730 hours on the race day. Cancellation information may be obtained by calling the SHYC Clubhouse at (860) 535-0112.

### 3 Classes

3.1 PHRF rated boats other than one-designs will race as a class. If ten or more such boats enter, the Race Committee (RC) may divide the class into two or more divisions.

3.2 One-design boats will race in separate Classes. Any one-design class entering three or more boats will be assigned a Class on the Scratch Sheet and be given its own start. One-design boats must meet their class standards. One-designs must be 22 ft. loa or longer to participate.

3.3 If three or more multihull boats with NEMA Rating Certificates enter, they will race as a class. If fewer than three enter, they will be given a start approximately five minutes after the last Class but will not be scored.

3.4 Scratch Sheets with class/division assignments will be available at the SHYC Clubhouse prior to 1200 hours on race days and from the Committee Boat and Mark Boat up to 15 minutes before the First Warning signal.

### 4 Rules

4.1 Races will be governed by *Racing Rules of Sailing ,2017-2020* as modified by these *Sailing Instructions* (SI's) and the NOR.

4.2 Rules 44.1 and 44.2 will be changed to a penalty of one turn.

4.3 In the event of conflict between the NOR and these SI's, the SI's will govern. Changes to the SI's will be posted on the Club website [www.shyc.us/racing](http://www.shyc.us/racing) and Race News board in the Clubhouse by 1000 hours on race day. Hard copies will be available at the Clubhouse.

4.4 Cruising canvas only will be allowed; no spinnakers and only one headsail of 135% or less.

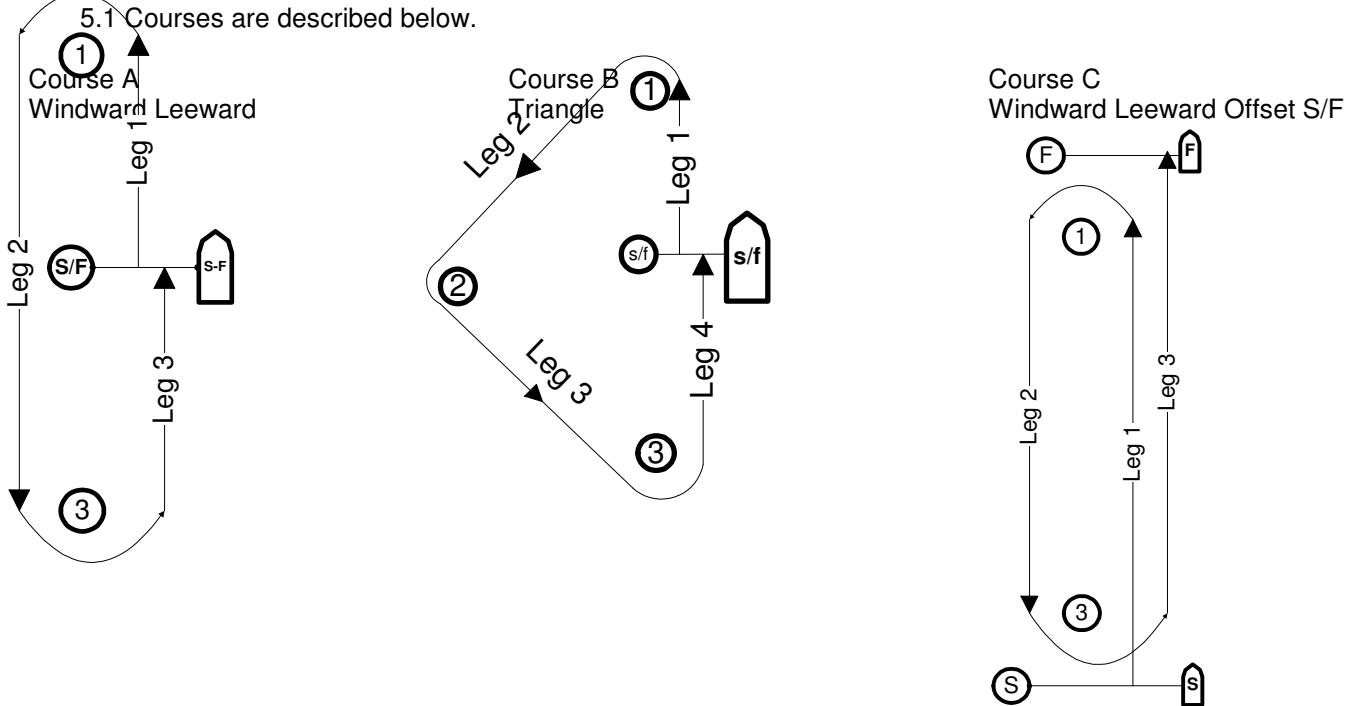
4.5 All boats intending to race will check-in with the Committee Boat between 1700 and 1725 hours using VHF channel 79 or by sailing under the Committee Boat's stern and announcing their intention to race.

4.6 Any boat abandoning the race should immediately notify the RC on channel 79 to avoid a post-race search for a lost boat.

4.7 See the NOR for rules regarding Eligibility and Entry.

## 5 Standard Courses

5.1 Courses are described below.



5.2 When the RC chooses a Standard Course, the Course Letter with compass bearing and approximate distance in nautical miles to the windward mark will be displayed on the course board atop the Committee Boat. If the Course is to be sailed twice-around, the Course Letter will be followed by the number '2', e.g. 'A 2' indicates Course A twice around.

5.3 Course Marks for Standard Courses are: for windward and leeward marks, large inflated yellow tetrahedrons; for a reaching mark, a large inflated orange tetrahedron.

5.4 The Starting Line will be between a staff on the Committee Boat bearing an orange flag and an inflated small orange tetrahedron. The RC will attempt to provide a start to windward.

5.5 The Finish Line for courses A and B will be the same as the Starting Line. The finish line for Course C will be as shown above.

5.6 If the first mark is a government mark, the appropriate letter from Section 6 of these SI's will be displayed following the course letter; e.g. 'A X S/F' indicates Standard Course A with X as the first mark; or 'B WR Y 2' indicates Standard Course B with WR as the first mark, twice around.

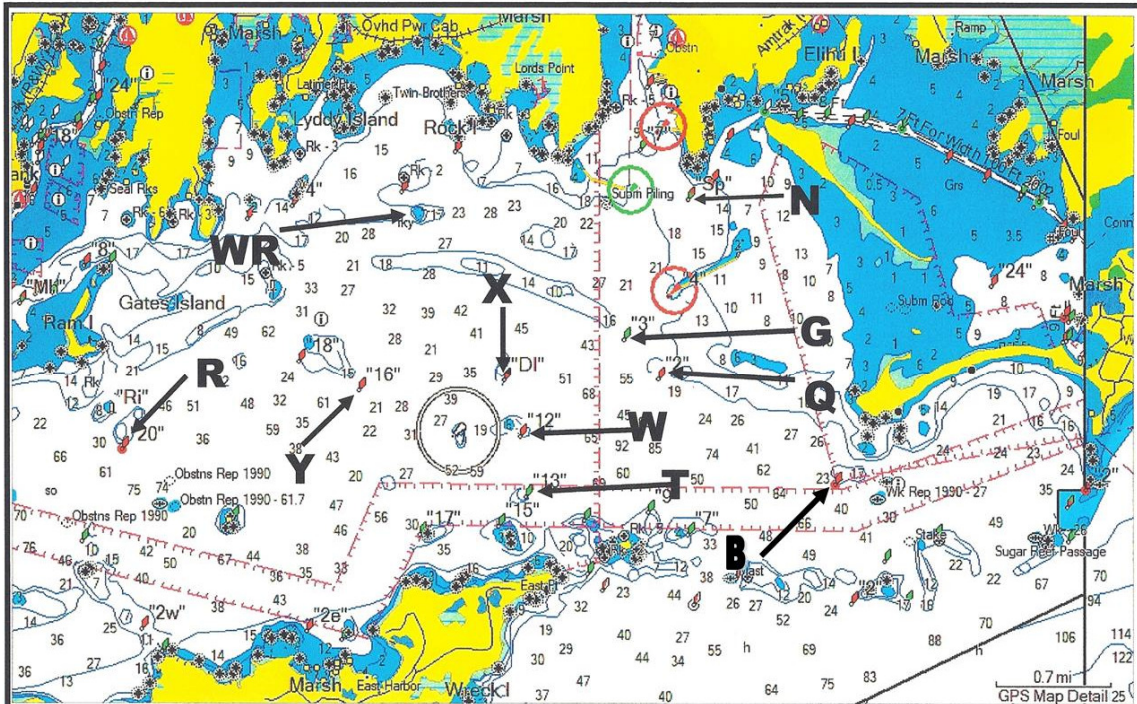
## 6 Course-Around Government Buoys

6.1 The RC may also choose Government Buoys as Course Marks. These Buoys and their assigned letters are shown below:

<u>Assigned Letter</u>	<u>Navigation Chart Designation</u>	<u>Buoy Location</u>
N	RG"SP"	Red and Green Nun 0.15 NM south of Stonington Point
G	G"3"	Green Gong 0.35 NM southwest of the horn on Bartlett Reef
Q	N"2"	Red Nun 0.45 NM south of the horn on Bartlett Reef
T	C"13"	Green Can 0.5 NM southeasterly from Latimer Light
W	N"12"	Red Nun 0.3 NM easterly from Latimer Light (mind the rock west of this mark)
X	C"DL"	Can 0.4 NM northeasterly of Latimer Light
Y	N"16"	Red Nun at southeast end of Eel Grass Ground

R	R"20"	Red Bell South of Ram Island Reef
WR	Rock	White Rock
B	R "6"	Red Bell Southwest of Napatree Point

### PHRF AND J/24 FLEET REFERENCE



**Gov't marks designated in Friday Twilight PHRF Series and J/24 fleet sailing instructions**

- 6.2 If Government Buoys are Marks of the Course, their assigned letters will be displayed on the Committee Boat Course Board in order of rounding. S/F indicates the start and finish line. Letters P(port) and S(starboard) indicate the side on which the buoy is to be left in rounding. Examples: R N P S/F, indicates Marks R and N, left to port, then to finish. R X P Y S S/F indicates Marks R and X to be left to port, Mark Y to starboard, then to finish.
- 6.3 The Starting Line will be between a staff on the Committee Boat bearing an orange flag and an orange inflated tetrahedron. The Finish Line will be the same as the Starting Line.
- 6.4 Restrictions: Boats may not pass south of Green Cans 9, 11, 15 and 17 at the north-eastern end of Fishers Island.
- 6.5 The RC may include one or more inflatable marks with one or more government marks for a course. The general location of the inflatable mark(s) will be announced on VHF 79 before the start of the class. The inflatable mark will be noted on the Course Board as mark 'IM'. An example course is: 'Y IM P S/F 2' which indicates the first mark is Y the second is the inflatable mark, both are left to port, twice around then finish. The RC will announce where IM is located which could be downwind of the Signal Boat or upwind of the Signal Boat. An inflatable mark may also be used as a wing mark; e.g. 'WR IM N P S/F 2' indicating WR is the first mark, the inflatable mark is the second mark, N is the third mark, all marks rounded to port, twice around. In this case the RC would announce IM is a wingmark on the left side of the course.
- 6.6 All Classes will sail the same course.

## 7 The Start

- 7.1 It is the intention of the RC to start three classes: **Class 1:** PHRF rated boats over 22 ft. loa; **Class 2:** One-design boats but only if 3 or more boats enter and indicate their intention to race; if less than three One-design appear they will race in Class 1 and the Race Committee will assign a rating consistent with the weather, **Class 3** NEMA rated multihulls.
- 7.2 All Classes will be started using the five minute sequence of RRS 26. There will be no rolling starts.



7.3 For the Start, the Class Flag will be Signal Pennant one for Class 1, Pennant two for Class 2, Pennant three for Class 3. Horn Sounds will supplement the raising and lowering of flags and pennants. Classes will be individually started using the 5 minute sequence of RRS Rule 26:

<u>Time Until Start</u>	<u>Signal</u>	<u>Flag</u>	<u>Sound</u>
5 minutes	First Warning	Class Pennant Up	1 Horn
4 minutes	Preparatory	'P' Flag Up	1 Horn
1 minute	One-Minute	'P' Flag Down	1 Long Horn
0 minutes	Start	Class pennant Down	1 Horn

7.6 Before the starting signal, any postponement will be indicated by display of pennant 'AP' with two Sounds.

7.7 Individual recalls will be signaled by flag 'X' and one horn blast (RRS 29.1) regardless of the number of boats being recalled. The RC will hail boats OCS on VHF channel 79. Recalled boats failing to restart will be assessed a 20 minute penalty to adjusted time. RRS 29.1 is modified accordingly

7.8 General recalls will be signaled in accordance with RRS 29.2. Warning signal for the recalled Class will be made one minute after the First Substitute signal is lowered.

7.9 Races will start in the area south of Wamphassuc Point.

## 8 Scoring

8.1 Scoring for PHRF boats will be time-on-time using the assigned ECSA-PHRF Rating. The Race Committee will assign a handicap rating to boats without an ECSA-PHRF rating certificate dated 2010 or later. Boats without such an acceptable rating certificate will be penalized four percent of adjusted time. The RC assigned rating may not be protested or appealed.

8.2 Each entered one-design class will be scored separately. Boats will be scored according to order of finish

8.3 Multihull boats will be scored time-on-time according to NEMA rules and scored as a Class.

8.4 Any boat not finishing the course by 1900 hours will be scored DNF.

8.5 Prizes will be awarded for each day's race at the shore party following the race. See NOR.

8.6 Trophies for the entire series will be awarded at SHYC Awards Night ceremony. In order to qualify for a series trophy, a boat must compete in four or more of the six races. Boats competing in four or more races will have their four best scores used in calculating their series score. Series scores will be determined by the low point system using each boat's ranking in each of her four best races. Separate awards will be made for PHRF, one-designs presenting three or more at the start and NEMA rated boats.

## 9 Protests

9.1 A boat that has taken a 360 degree penalty under RRS Rule 44.2 will notify the RC on VHF channel 79 immediately after finishing the race describing the incident and the other boat(s) involved.

9.2 A boat intending to file a protest will fly a red signal and, within an hour of docking, present RC a written protest detailing the parties involved and the RRS rules violated. RC will, within a week, assemble a Protest Committee, hear the protest and issue a decision. Any race in which a protest occurs will not be scored until the protest is decided.

## 10 Responsibility

10.1 Each boat's master will be responsible for the condition of his boat and its gear and equipment, including safety gear; for the capability of his crew and the conduct of his boat and its crew before, during and after the races. By entering any or all of these races, he acknowledges these responsibilities and that the SHYC, its Race Committee and individual members simply perform a service by providing a structure and venue in which he may or may not chose to race his boat. Each person aboard must sign a liability waiver available on-line ([www.shyc.us/racing](http://www.shyc.us/racing)) or at the Clubhouse unless he has, within the year, signed such a waiver. Each waiver is effective for one calendar year. See also RRS 4.

## 11 Shore Party

11.1 Prizes will be awarded at the Shore Party following each race. See the NOR for details.